

Distribution Terminal box: YTDB-2M64A

Overview

YTDB-2M64A terminal box terminates up to 2 fiber optic cables, offers spaces for splitters and allocates 64 SC adapters and working under both indoor and outdoor environments. It is a perfect cost-effective solution-provider in the FTTx networks.

Features

- Metal material for the max strength.
- Easy installations: Ready for wall mount – installation kits provided.
- Ready for splitters: designed space for adding splitters.
- Space saving! Double-layer design for easier installation and maintenances:
- Upper layer for splitters and distribution
- Lower layer for splicing
- Cable fixing units provided for fixing the outdoor optical cable.
- Accommodates both cable glands as well as tie-wraps
- Lock provided for extra security.



Dimensions and Capacity

Dimension (H x W x D)	Capacity (FO)	Splitter Ratio
350 x 350 x 110 mm	16 SC	1 / 2 : 16
460 x 350 x 110 mm	32 SC	1 / 2 : 32
700 x 400 x 120 mm	64 SC	1 / 2 : 64

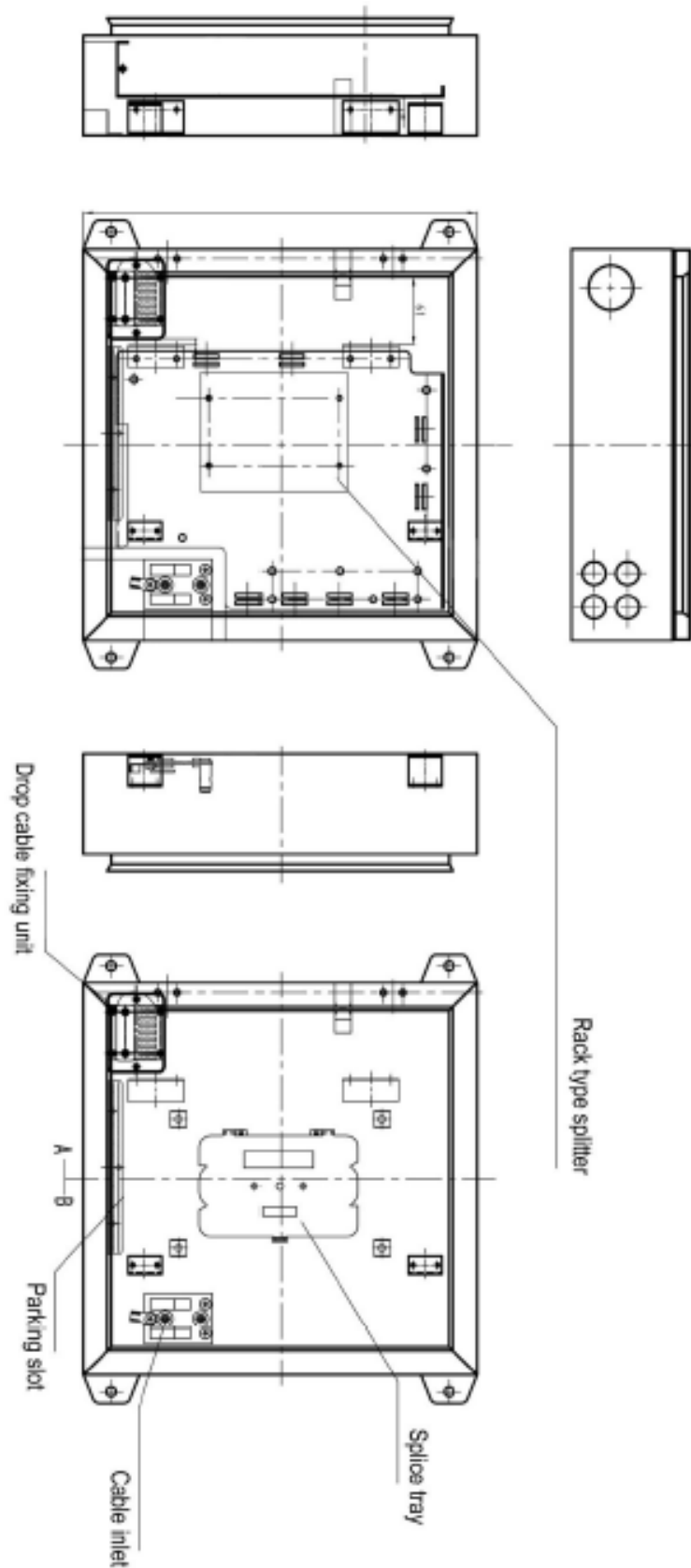
Operation Conditions

Temperature	Humidity	Air Pressure
-40°C -- 60°C	93% at 40°C	62kPa – 101kPa

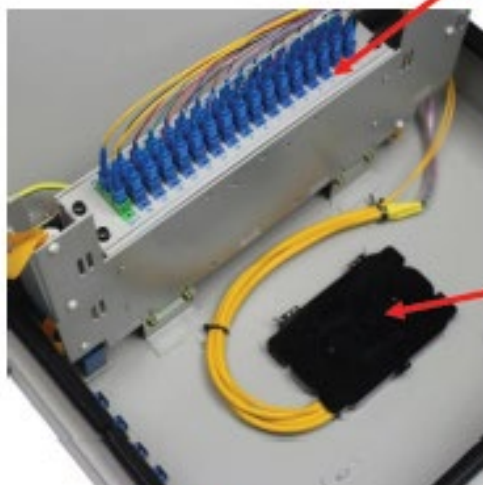
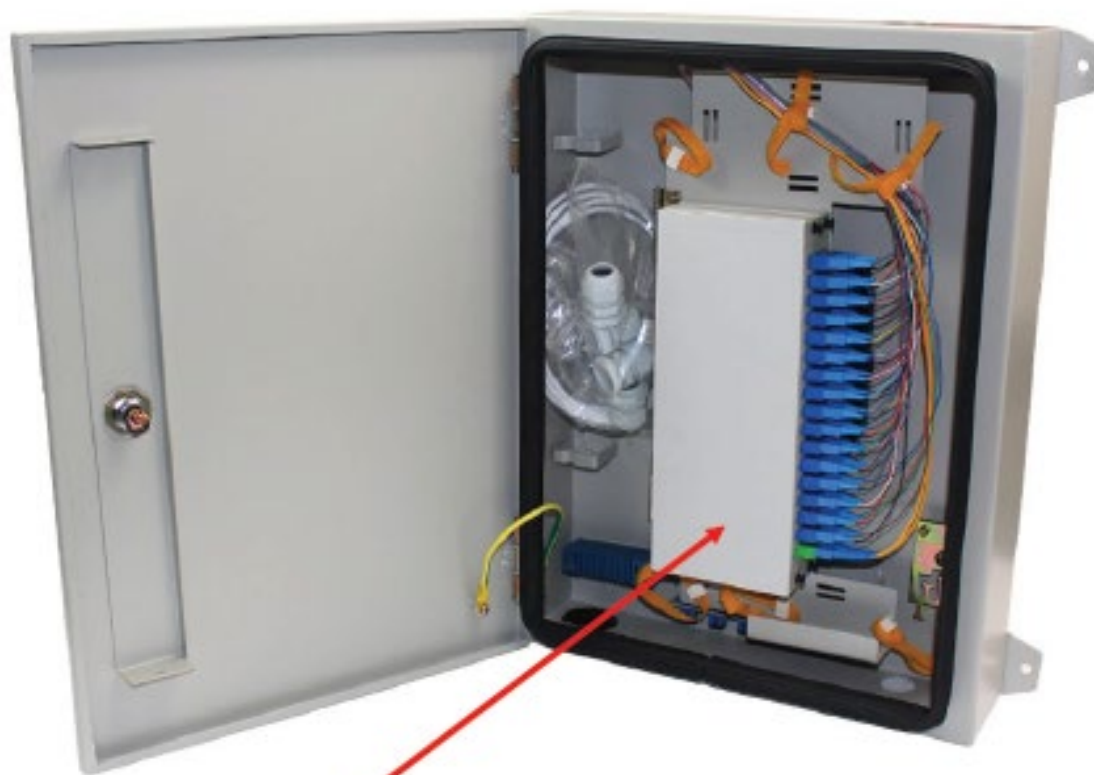
Packing

Package Contents	Material
Terminal box, 1 unit; Installation accessories, 1 set	Carton Box

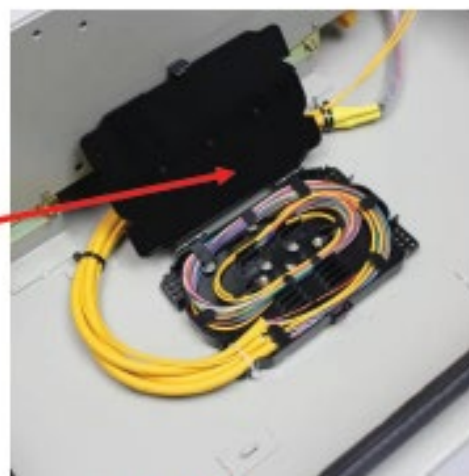
Technical Drawing



Part Details



Micro splitter



Splice tray

Catalog number

YTDB-2M64A



Connector Type
SU = SC UPC
SA = SC APC
LU = LC UPC
LA = LC APC
OO = Other*

Adapter Quantity
Enter the quantity required
N = No requirement

Fiber Type	
S = G652D	Single Mode
D = G655	
K = G656	
P = G657A1	
L = G657A2	Multi Mode
B = OM1 (62.5/125μm)	
G = OM1 (50/125μm)	
Q = OM2 (50/125μm)	
W = Om3	
Y = Om4	
O = Other*	
N = No requirement	

Fusion Tube
Y = Yes
N = No

Cable Color
Y = Yellow
B = Blue
W = White
O = Orange
G = Green
Z = Brown
S = Slate
R = Red
H = Black
P = Purple
F = Rose
A = Aqua
C = Color coded
N = No requirement

Pigtail Quantity
Enter the quantity required
N = No requirement